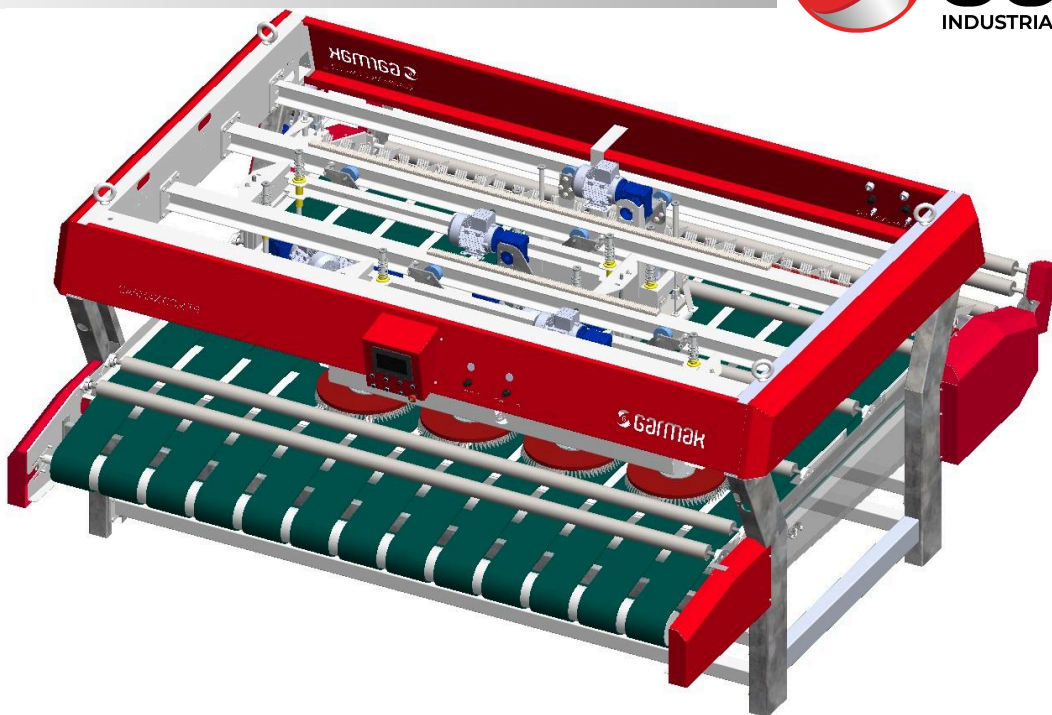


User Manual & Warranty Certificate



Garmak
INDUSTRIAL CLEANING TECHNOLOGY



GIGA AUTOMATIC CARPET WASHING MACHINE

CONTENTS

1. INTRODUCTION	3
2. MACHINE PARTS	4
3. PLACEMENT	7
4. WORKFLOW CHART	8
5. INSTALLATION	9
6. OPERATING THE MACHINE	10
7. MAINTENANCE	13
8. FAULTS SOLUTIONS	14
9. WARRANTY SCOPE	16
10. SPECIAL CASES	17

1. ENTRANCE

Dear Gar-Mak user, first of all, thank you for choosing the Gar-Mak brand.

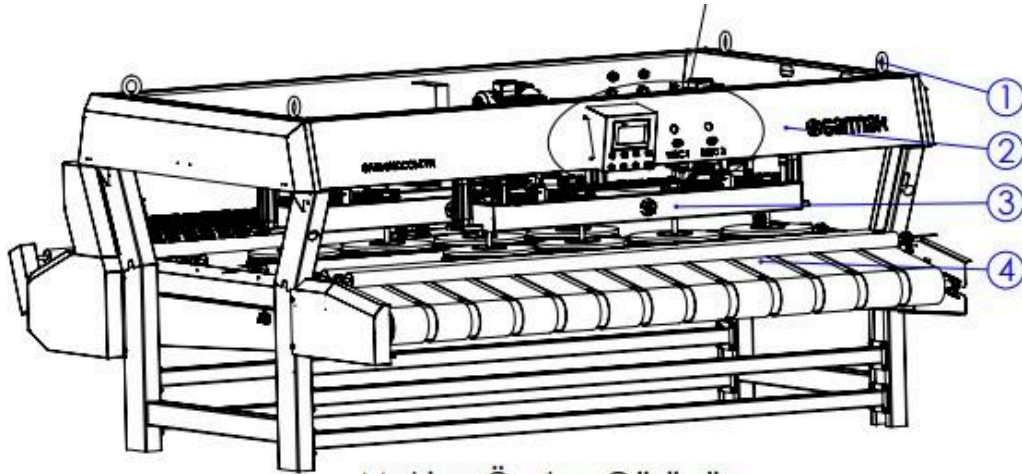
This product is an automatic carpet washing machine that makes carpets hygienic with wet washing in the carpet washing factory. In general, the washing process is carried out by wetting, brushing with shampoo, brushing with rinse water, rinsing with softener, rinsing with vacuum, roller combing, and bottom brushing. Thanks to the Gar-Mak industrial carpet washing machine, you can make the washing process extremely fast, rigid and standardized. You can observe that the stains of the washed carpets are easily removed, and wet washing also disinfects the carpet. Please review this manual carefully in order to operate your automatic carpet washing machine with high efficiency and economy and to use it for a long time.

In addition to usage information, the manual includes introductory and technical data about the product, assembly, commissioning, workflow diagram, installation, first start-up, maintenance, malfunctions and solutions and warranty coverage. For more detailed information about your product, you can access the product web page, catalog or brochure and, when necessary, Gar-Mak's contact information.

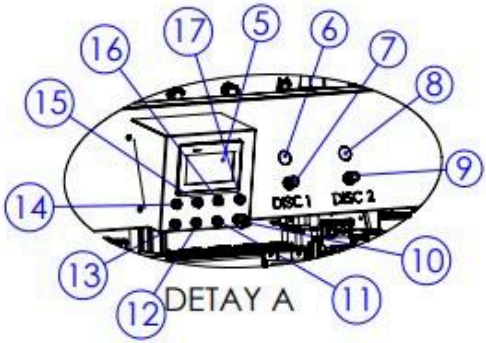
After the Gar-Mak carpet washing machine is installed by our authorized service, necessary information will be given about the use and maintenance of the product. You can ask unclear questions over and over again. Keep this user manual in a safe place to use as a reference source. We wish you good work.

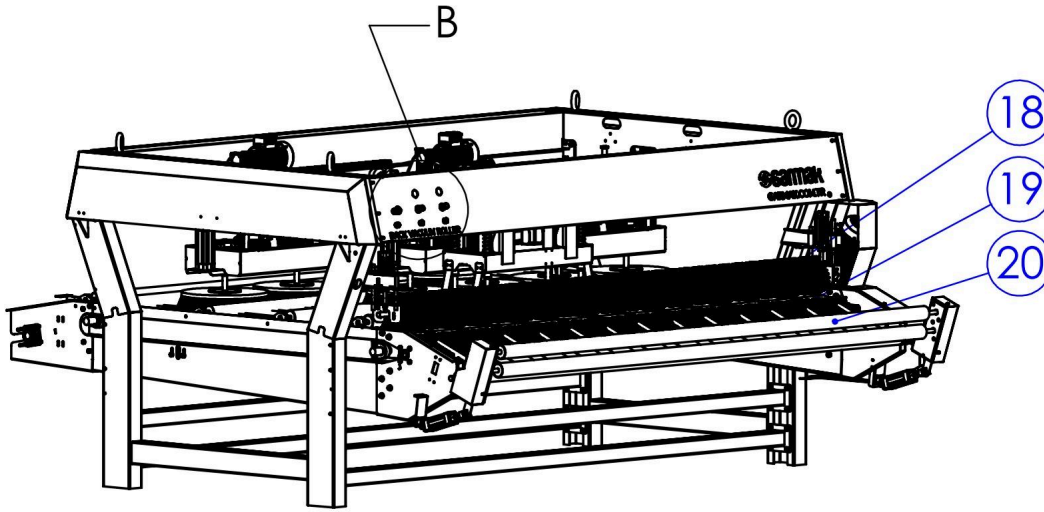
GarMak R&D Team

2. MACHINE PARTS



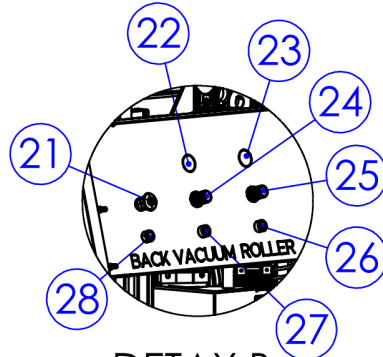
1. Machinery Transport Aybolt
2. Front Cover
3. Brush Trolley
4. Conveyor Belt
5. Touch Panel
6. 1. Disc Brush Group Pressure Gauge
7. 1. Disc Brush Group Pressure Adjustment Button
8. 2. Disc Brush Group Pressure Gauge
9. 2. Disc Brush Group Pressure Adjustment Button
10. Emergency Stop Button
11. Tape Speed Adjustment Potentiometer
12. Tape Back Button
13. Band Forward Button
14. There Is Energy Lamp
15. Auto Start Lamp
16. Tape Running Lamp
17. Even Sirens





- 18. Top Roller Brush
- 19. Lower Roller Brush
- 20. Automatic Winding Mechanism
- 21. Emergency Stop Button
- 22. Vacuum Pressure Gauge
- 23. Roller Brush Pressure Gauge
- 24. Vacuum Pressure Adjustment Button
- 25. Roller Brush Pressure Adjustment Button
- 26. Roller Brush Manual Operation Button
- 27. Vacuum Manual Operation Button
- 28. Bottom Wash Manual Operation Button

Makine Arkadan Görünüş



DETAY B

3. TECHNICAL SPECIFICATIONS

Ürün Kodu	XP3025F0VNB	XP3025F12VNB	XP3025F8GBB	XP3030F0VNB	XP3030F12VNB	XP3030F8GBB	XP3035F0VNB	XP3035F12VNB	XP3035F8GBB	XP3042F0VNB	XP3042F12VNB	XP3042F8GBB
Kullanım Geniğiği	250 cm	250 cm	250 cm	300 cm	300 cm	300 cm	350 cm	350 cm	350 cm	420 cm	420 cm	420 cm
Malzeme	Galvaniz	Galvaniz	Galvaniz	Galvaniz	Galvaniz	Galvaniz	Galvaniz	Galvaniz	Galvaniz	Galvaniz	Galvaniz	Galvaniz
Dişresel Fırça	8	12	8	8	12	8	8	12	8	8	12	8
Su Tüketimi	20 - 50 lt / dk	35 - 75 lt / dk	35 - 75 lt / dk	25 - 55 lt / dk	40 - 80 lt / dk	40 - 80 lt / dk	30 - 60 lt / dk	45 - 85 lt / dk	45 - 85 lt / dk	40 - 70 lt / dk	55 - 100 lt / dk	55 - 100 lt / dk
Elektrik Tüketimi ±%20	18 kw/sa	25 kw/sa	23 kw/sa	13 kw/sa	25 kw/sa	26 kw/sa	18 kw/sa	25 kw/sa	28 kw/sa	13 kw/sa	25 kw/sa	28 kw/sa
Elektrik Besleme*	3 Fazlı 380 Volt 50 - 60 Hz	3 Fazlı 380 Volt 50 - 60 Hz	3 Fazlı 380 Volt 50 - 60 Hz	3 Fazlı 380 Volt 50 - 60 Hz	3 Fazlı 380 Volt 50 - 60 Hz	3 Fazlı 380 Volt 50 - 60 Hz	3 Fazlı 380 Volt 50 - 60 Hz	3 Fazlı 380 Volt 50 - 60 Hz	3 Fazlı 380 Volt 50 - 60 Hz	3 Fazlı 380 Volt 50 - 60 Hz	3 Fazlı 380 Volt 50 - 60 Hz	3 Fazlı 380 Volt 50 - 60 Hz
Kontrol Paneli	Dejeneratif + Batas Panel	Dejeneratif + Batas Panel	Dejeneratif + Batas Panel	Dejeneratif + Batas Panel	Dejeneratif + Batas Panel	Dejeneratif + Batas Panel	Dejeneratif + Batas Panel	Dejeneratif + Batas Panel	Dejeneratif + Batas Panel	Dejeneratif + Batas Panel	Dejeneratif + Batas Panel	Dejeneratif + Batas Panel
Kontrol Sistemi	PLC	PLC	PLC	PLC	PLC	PLC	PLC	PLC	PLC	PLC	PLC	PLC
İşlet Çapıma Hızı	1 m / dk	1,2 m / dk	1,5 m / dk	1 m / dk	1,2 m / dk	1,5 m / dk	1 m / dk	1,2 m / dk	1,5 m / dk	1 m / dk	1,2 m / dk	1,5 m / dk
Anam Kapasite	1000 m ²	1200 m ²	1500 m ²	1100 m ²	1300 m ²	1600 m ²	1250 m ²	1450 m ²	1750 m ²	1650 m ²	1950 m ²	2000 m ²
Baskılama Sistemi	Pnömatik	Pnömatik	Pnömatik	Pnömatik	Pnömatik	Pnömatik	Pnömatik	Pnömatik	Pnömatik	Pnömatik	Pnömatik	Pnömatik
Hız Kontrolü	✓	✓	✓	✓	✓	✓	✓	✓	✓	✓	✓	✓
Kullanım Şekli	Tam Otomatik	Tam Otomatik	Tam Otomatik	Tam Otomatik	Tam Otomatik	Tam Otomatik	Tam Otomatik	Tam Otomatik	Tam Otomatik	Tam Otomatik	Tam Otomatik	Tam Otomatik
Rale Yürütme	✓	✓	✓	✓	✓	✓	✓	✓	✓	✓	✓	✓
Alt Yıkama	✓	✓	✓	✓	✓	✓	✓	✓	✓	✓	✓	✓
Vakum	✓	✓	X	✓	✓	X	✓	✓	X	✓	✓	X
Otomatik Değişim	✓	✓	✓	✓	✓	✓	✓	✓	✓	✓	✓	✓
Otomatik Sarma	✓	✓	✓	✓	✓	✓	✓	✓	✓	✓	✓	✓
Otomatik Yamaçlama	0	0	0	0	0	0	0	0	0	0	0	0
Otomatik Çamaşır	✓	✓	✓	✓	✓	✓	✓	✓	✓	✓	✓	✓
LED Aydınlatma	✓	✓	✓	✓	✓	✓	✓	✓	✓	✓	✓	✓
Sensör Kontrolü	✓	✓	✓	✓	✓	✓	✓	✓	✓	✓	✓	✓
Üst Yıkama	✓	✓	✓	✓	✓	✓	✓	✓	✓	✓	✓	✓
Ana Yıkama	✓	✓	✓	✓	✓	✓	✓	✓	✓	✓	✓	✓
Gezer Bula	X	X	✓	X	X	✓	X	X	✓	X	X	✓
Extra Durulama	X	✓	✓	X	✓	✓	X	✓	✓	X	✓	✓
Sertifika	CE, GOST-R	CE, GOST-R	CE, GOST-R	CE, GOST-R	CE, GOST-R	CE, GOST-R	CE, GOST-R	CE, GOST-R	CE, GOST-R	CE, GOST-R	CE, GOST-R	CE, GOST-R
Güvenlik	1 Yı	1 Yı	1 Yı	1 Yı	1 Yı	1 Yı	1 Yı	1 Yı	1 Yı	1 Yı	1 Yı	1 Yı
En	315 cm	315 cm	315 cm	365 cm	365 cm	365 cm	415 cm	415 cm	415 cm	485 cm	485 cm	485 cm
Yükseklik	175 cm	175 cm	175 cm	175 cm	175 cm	175 cm	175 cm	175 cm	175 cm	175 cm	175 cm	175 cm
Boy	365 cm	365 cm	365 cm	365 cm	365 cm	365 cm	365 cm	365 cm	365 cm	365 cm	365 cm	365 cm
Ağırlık	2000 kg	2200 kg	2290 kg	2100 kg	2400 kg	2650 kg	2300 kg	2300 kg	2650 kg	2800 kg	3100 kg	3260 kg
Taşıma Ebatı (cm)	315x240x180	315x240x180	315x240x180	425x240x180	425x240x180	425x240x180	475x240x180	475x240x180	475x240x180	545x240x180	545x240x180	545x240x180

4. PLACEMENT

GarMak carpet washing machines viinch, long hook forklift or pallet truck can carry. Apart from this, special transport wheels are also available. available. In all modes of transportation, the rubber suction cups on the lower legs of the machine must be removed. This will both provide ease of transportation and prevent the part from deforming.

Due to the weight of the machine, do not try to move the machine by force with a single personnel. Do not remove the covers to insert them into areas where the machine cannot enter. Position the machine in your washing area in a way that provides easy working distance in front and behind. When positioning the machine, choose a location that will reduce unnecessary carpet carrying. Positioning the washing machine close to the area where you stack the dirty carpets or positioning it near the carpets coming out of the beater can reduce unnecessary carpet carrying and speed up the work flow.

Leave a distance of 40 cm to the side of the machine where the doors can be opened. Leave a working distance of 120cm in front of the machine and a minimum of 150cm behind it. The carpet washing machine cannot be installed outdoors, even if it is protected, as exposure to wind and rain is harmful to the life of the machine.

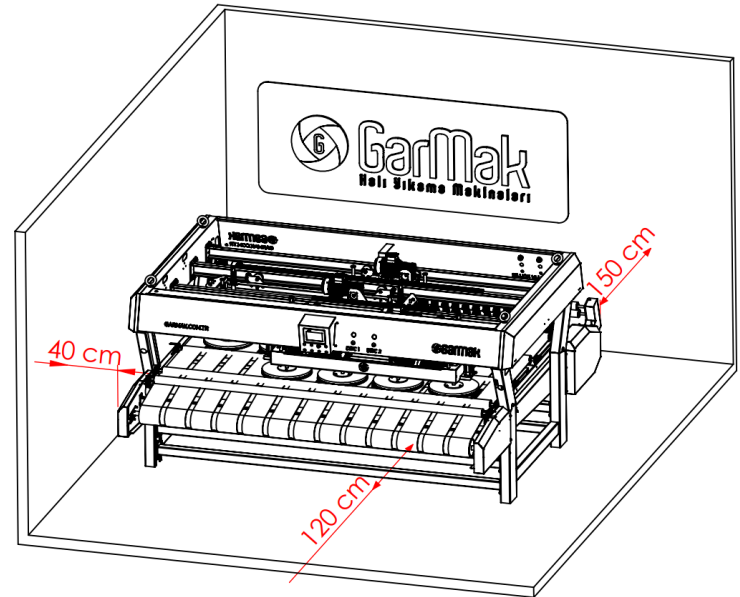


Figure 6 (Machine Positioning Diagram)

5. WORK FLOW CHART

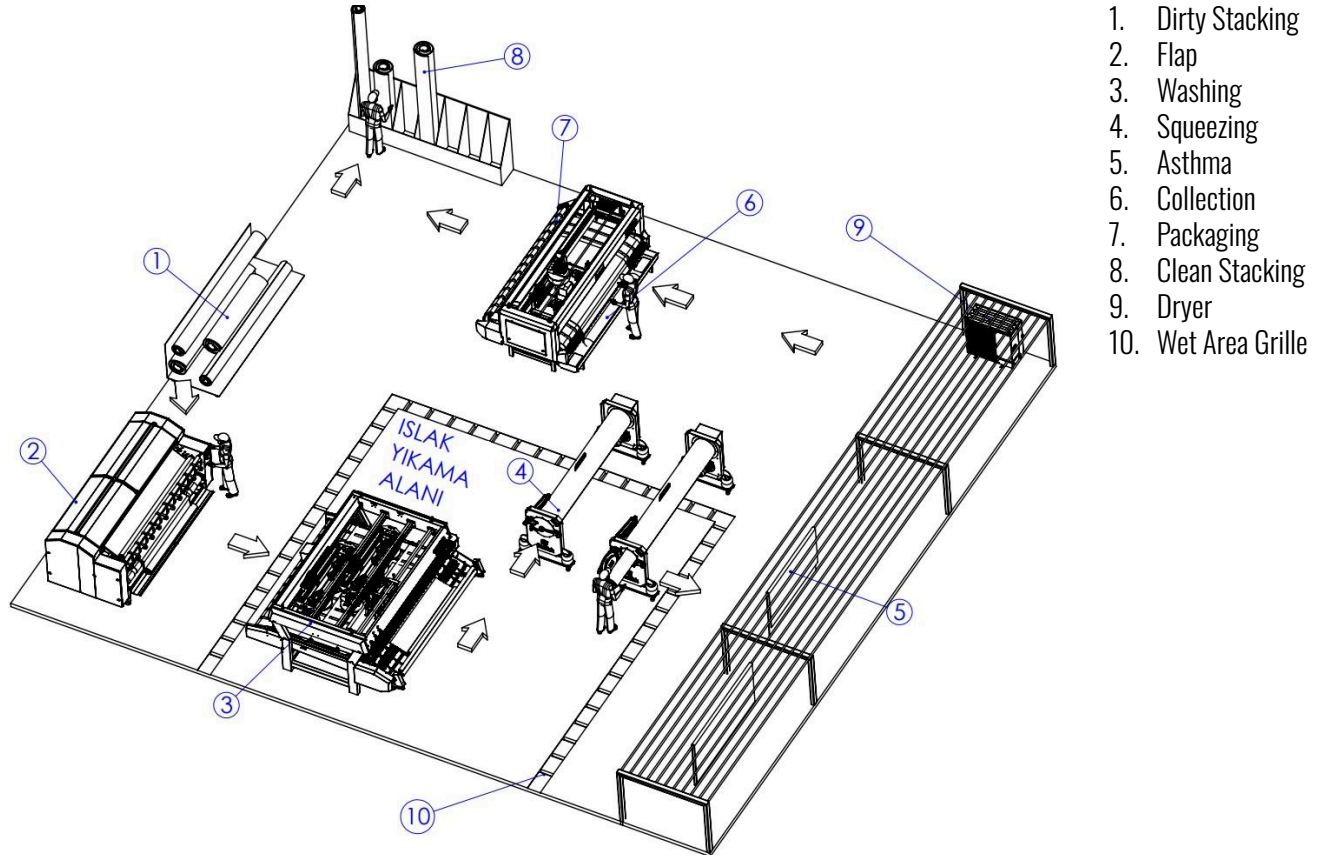


Figure 7 (Ideal Workflow Diagram)

6. SETUP

The plug of the installed carpet washing machine must be easily accessible.

Before inserting the plug into the socket, pay attention to the following:

- The grounding of the socket complies with the applicable standards;
 - The socket must be able to carry the maximum power specified in the technical specifications table of the machine;
 - The socket is compatible with the plug of your machine. Otherwise, replace the plug or socket.
1. Before starting any operation on the machine, the operating switch and emergency stop button must be in the off position.
 2. The machine should be installed on a flat surface.
 3. If the place where the machine will be placed is clear, you can lower it to that area by attaching its wedges.
 4. In order for the machine to operate, it must be connected with a 380 Volt 3 phase 50 Hz and a resistant fuse with a load rating of up to 32 amps.
 5. The vacuum bag of the machine should be installed inside the side cover. It should be checked every day and emptied before it is full or replaced with a spare.
 6. Make sure the machine vacuum hoses are fully attached.
 7. Before the first start-up, the parts of the machine that will come into contact with the carpet should be cleaned.
 8. Before the first start-up, the height of the surface to vacuum the carpet should be checked and the ideal space for the carpet to pass should be left.
 9. If the top covers, rear covers and side covers of the machine are closed, you can start operating.

7. OPERATING THE MACHINE

1. Attention! Before feeding the carpet into the machine, make sure that there is no material other than carpet on the belt.
2. Do not remove long dresses, scarves, skirts, shawls, etc. hanging from you while the machine is operating. Do not approach the machine with clothes on. Such clothes caught in the machine can cause fatal accidents.
3. When the electrical equipment is correctly connected to the machine, the start and emergency stop buttons should be turned and turned on, and the correct direction of rotation of all motors should be checked by starting it manually from the machine screen.
4. If the phases are connected incorrectly, the machine will not work. For the correct direction of rotation, the phases must be reconnected by relocating them. The siren of the incorrectly connected machine will sound.
5. The carpet should be placed on the tape at the entrance of the machine with the pile threads facing upwards.
6. The carpet should be placed parallel and flat to the tape pipe. Do not place any carpets in the machine diagonally or with folded ends.
7. The dosing pump hoses of the machine are placed in the shampoo and softener.

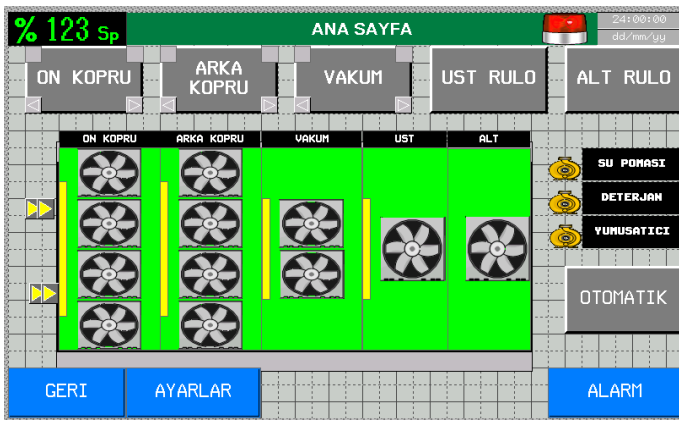
Autorun

8. The tape is operated with the tape forward button located under the touch panel.
9. The AUTOMATIC button located at the bottom right of the touch panel is activated.
10. The water valve is opened and the carpet is wetted.

11. All other components (front bridge brush group, shampoo pump, rear bridge brush group, vacuum, upper roller brush, rinse pump and lower roller brush will work automatically while advancing the carpet.
12. Each working component will move on the working screen, and the position of the carpet will appear in red on the green background.
13. Active drums will be green on the screen when the sensors are activated.



LOGIN LANGUAGE SELECTION SCREEN



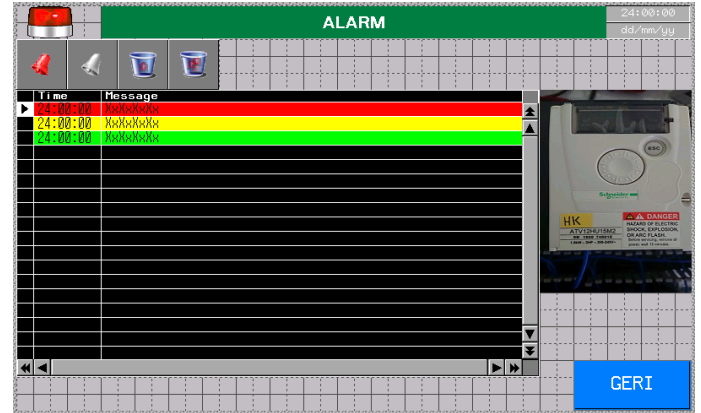
OPERATION SCREEN

14. Belt speed adjustment should be given so that the vacuum vacuums the entire carpet at least once. In carpets that are washed too quickly, unvacuumed surfaces may remain.


Manual Operation

15. It can also be operated manually with the help of the buttons on the machine screen and at the bottom of the screen.
16. When the machine is operated manually, the components along which the carpet moves are controlled by the operators, and whichever component the carpet lands under, that component is activated on the screen.
17. In order to prevent the carpet from deforming, the lower roller brush does not move without operating the tape.
18. If the brush bridges, upper roller brush and vacuum groups are not adjusted at a sufficient height during washing, the carpet may get stuck between the sweeper and the belt. To prevent this from happening, it is vitally important that you check the carpet progress at first start-up.

19. Any problem that may occur in any module while the machine is running will bring the screen to the alarm screen. Error details will be shown on the screen with text and photographs. For example, when the driver fails due to heating or voltage errors in the machine, the screen will automatically switch from the working screen to the ALARM screen, the driver information will appear in the table on the left, and the driver photo will appear in the table on the right.
20. Timing settings of the machine are made on the settings screen. To find the ideal washing setting, you can change the data on this screen according to your own operating principle.
21. In order for the machine to wash optimally in narrow mode, the brushes must move at least 50 cm. Do not reduce the narrow mode setting below this distance.
22. You can feed carpets into the machine one after the other or side by side.



ALARM SCREEN



AYARLAR

24:00:00
dd/mm/yy

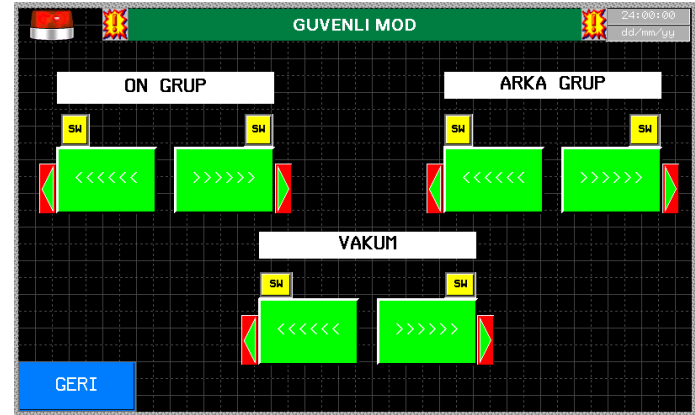
ON KOPRU	AKTUEL	ARKA KOPRU	AKTUEL	VAKUM	AKTUEL	UST RULO	AKTUEL
INIS	INIS	INIS	INIS	INIS	INIS	INIS	INIS
12 cm	12	12 cm	12	12 cm	12	12 cm	12
KALKIS	KALKIS	KALKIS	KALKIS	KALKIS	KALKIS	KALKIS	KALKIS
12 cm	12	12 cm	12	12 cm	12	12 cm	12

CONFIG

GERI **GUVENLI MOD**

SETTINGS SCREEN

23. Do not put carpets that are rotten, at risk of tearing or breaking, into the washing machine.
24. The washing process is completed when the carpet has been washed in the rear chamber and comes to the automatic roll winding.
25. By moving the pneumatic control joystick downwards, the carpet is taken onto the transport trolley and placed in the wringing machine.
26. From the safe mode screen, the machine's motors can be moved left and right independently.
27. With this mode, you can save stuck carpets and move the machine independently of the sensors when the machine sensors fail.
28. Do not have this process done by uninformed people. If possible, use this mode while communicating with our technical team.



SAFE MODE SCREEN

8. CARE

Gar-Mak industrial carpet washing machine is produced with high performance and quality to be used for many years. In order for the carpet washing machine to maintain its durability and performance, the maintenance instructions in this section should be read carefully and the machine should be maintained in accordance with the procedure.

1. The most important thing to pay attention to in carpet washing machine maintenance is cleaning. The machine must be cleaned at the end of the day. Daily cleaning of belts, brushes and vacuum tanks should be done on intensively working machines. At the same time, to prevent clogging, the bottom of the machine should be cleaned with pressurized water every day at the end of work. Lint lumps that cause bad odors in machines that are not cleaned can cause different problems in the coming days.
2. The ball bearings, moving rollers and plastic gears of the machine should be lubricated with grease from the grease fittings every 6 months and the excess oil should be wiped off with a cloth.
3. The reducer oils of the machine should be checked every 6 months, and additional oil should be added to the reducer whose oil is missing.
4. The chain sprockets inside the machine's protection covers should be checked and lubricated to prevent rust.
5. Electrical circuits should be kept away from moisture and water. Electrical cables should not be routed through open areas, they should not be stepped on, and in case of wear or breakage on the cables, precautions should be taken immediately and they should be replaced.
6. While the machine is operating, all covers must be closed and the machine must not be operated while it is open.
7. Warning signs on the machine must be adhered to, and hands and feet must not be inserted into rotating or moving parts.
8. You should not approach the brush at the back of the machine with hanging clothes, and uninformed personnel should be prevented from using the machine.
9. The machine must be used by trained people. Please do not deliver the machine without training your new staff.

9. FAILURES SOLUTIONS

1. The machine folds the carpets.

- 1.1. Incorrect rotation direction of circular brushes may cause carpets to fold. The circular brushes on the edge of the machine should rotate to turn the carpet inward.
- 1.2. New circular brushes can crease the carpet. Renewed brushes must be used with hard sandpaper or a different abrasive before washing. You can prevent such problems from occurring by using original GarMak brushes whenever possible.
- 1.3. While the carpet washing machine is washing the carpets, the circular brushes can move the carpets with folded ends by lifting them over the belt when operated manually. If these carpets have a structure that can wrinkle like rugs, utmost care should be taken when washing these carpets and they should be washed in automatic mode as much as possible. The carpet should be sandwiched between two pipes, and the washing components should not be pressed excessively on such carpets. Very loose special carpets can be washed manually by squeezing them between communication pipes.
- 1.4. If the rotation direction of the roller brush is incorrect, it may cause the carpet to fold. The roller brush should brush the carpet in a way that moves towards the exit direction of the belt.
- 1.5. In cases where the circular brush bridges are not parallel to the tape, the brushes may cause the problem of constantly folding the carpet from one side. In this case, the washing bridges of the machine should be adjusted from the handlebars on the edge and made parallel to the belt.

2. Vacuum does not suction.

- 2.1. Make sure the vacuum motor is rotating in the correct direction. When the vacuum is turned on, water flows into the vacuum mechanism. If there is no water flow, the direction of motor rotation is reversed. Change the direction of the vacuum motor by changing the phase connections on the panel.
- 2.2. Check the connections of the vacuum hose, if it is disconnected, loosen it from its clamp and reconnect it.
- 2.3. If the vacuum hoses are clogged, remove them and clean them.
- 2.4. Vacuumed thread pellets from extremely dusty carpets can clog the inside of the vacuum filter. The vacuum filter should be disassembled and washed in water during weekly cleaning to ensure that it is clean.
- 2.5. If the vacuum tank is completely filled during long-term washing processes, vacuum shrinkage may occur. To facilitate the evacuation of the vacuum tank at regular intervals, you can rest the vacuum motor for 5 minutes in 60 minutes.

3. Machine start button does not work.

- 3.1. Have the electrical connection checked by an electrician.
- 3.2. Make sure that the phases are connected correctly.

4. There is excessive noise.

- 4.1. The bearings of the high-speed rotating parts of the machine must be replaced with new ones during annual maintenance. The rotation speed of the brushes can reduce the life of the brush bearings by up to one year, depending on your usage intensity.
- 4.2. Machine roller brushes may experience itching during displacement. The squeak can be stopped by loosening and tightening the grub screws of bearing bearings that are likely to make a squeaking sound between two contracting bearings.
- 4.3. When the moving parts of the machine need lubrication, they can make a similar squeaking sound. These rollers and plastic gears need to be lubricated every 6 months.
- 4.4. If the machine covers are open or half open, vibration may cause the machine to rattle. You must operate the machine in the closed position by placing the covers' latches in the closed position.
- 4.5. If there is an abnormal problem in the conveyor belt mechanism of the machine, report the situation to the GarMak service representative.
5. **When I start the machine, there is a sound from the engine, but the machine does not start.**
 - 5.1. One of your phases may not be coming. Have your phases checked by an electrician.
 - 5.2. Check the contactors or motor protection switches on the main panel.
 - 5.3. There may be a break in the cables. Have your wiring checked by an electrician.
 - 5.4. The engine may have burned out. Replace it with a new one.

10. WARRANTY SCOPE

The following situations take the machine out of warranty.

1. Machines that have not been installed, have not been trained, and whose warranty certificate has not been signed are out of warranty.
2. 365 days after installation.
3. Not using the machine as instructed in the user manual and training.
4. Ignoring malfunctions that occur or may occur in the machine and operating the machine malfunctioning.
5. Incorrect use with insufficient information.
6. Failure to provide adequate and timely maintenance to the machine.
7. Exceeding the permitted capacity of the product.
8. Malfunctions that may occur in the machine as a result of incorrect use by untrained people.
9. Any problems that may occur during transportation and shipment.
10. Malfunctions that may occur in the electrical installation of the machine as a result of electrical problems arising from the electrical network during product assembly.
11. Malfunctions that may occur as a result of incorrect connection and electrical failures due to voltage drop.
12. Installation, maintenance and location changes made without the approval of Gar-Mak officials.
13. The workplace, ground and environment where the product is placed are not suitable for operating machinery.
14. All problems that may arise as a result of the use of unhealthy personnel (staff addicted to alcohol, drugs and similar stimulants).
15. Malfunctions that may occur as a result of improper layout of the machine.
16. Problems that may occur as a result of using tools and equipment that are not suitable for the machine.
17. Floods, traffic accidents, lightning strikes, earthquakes, etc. that may occur in the places where the machine is placed. Malfunctions caused by the effects on the machine.
18. Electric motors and malfunctions that may arise from electrical problems.
19. Malfunctions that may occur as a result of not adequately lubricating the machine from the places that need to be lubricated.
20. Malfunctions that may occur as a result of not cleaning the machine sufficiently.

11. SPECIAL SITUATIONS

1. Malfunctions that may occur as a result of removing the protection covers on the machine and the resulting injuries, injuries and deaths,
2. Malfunctions and errors that may occur as a result of not feeding the carpets to the machine in the shape and direction shown in the training and user manuals,
3. Malfunctions that may occur as a result of placing the carpets folded into the machine,
4. Malfunctions that may occur as a result of all kinds of welding, drilling and adaptation to the machine,
5. Problems that may occur as a result of using the machines without performing the general cleaning that should be done when the machine is first used;

Gar-Mak Machinery and its officials cannot be held responsible.

<p>Manufacturer Company Gar-Mak Machinery Chemical Engineering Industry and Trade Limited Company Dumlupınar Mahallesi Alize Caddesi No. 5 Nilüfer Bursa Türkiye Telephone: +90 224 346 05 95 Fax : +90 224 346 05 96 info@gar-mak.com www.gar-mak.com</p>	<p>Buyer Information:</p> <p>Installation Date: Product Serial Number: I received the machine in working condition. I received an education. I accept the information, warranty coverage and special conditions in the user manual. Signature:</p>
<p>Delivery Personnel Information: Signature:</p>	<p>Installation Date: Product Serial number: Buyer Signature:</p> 